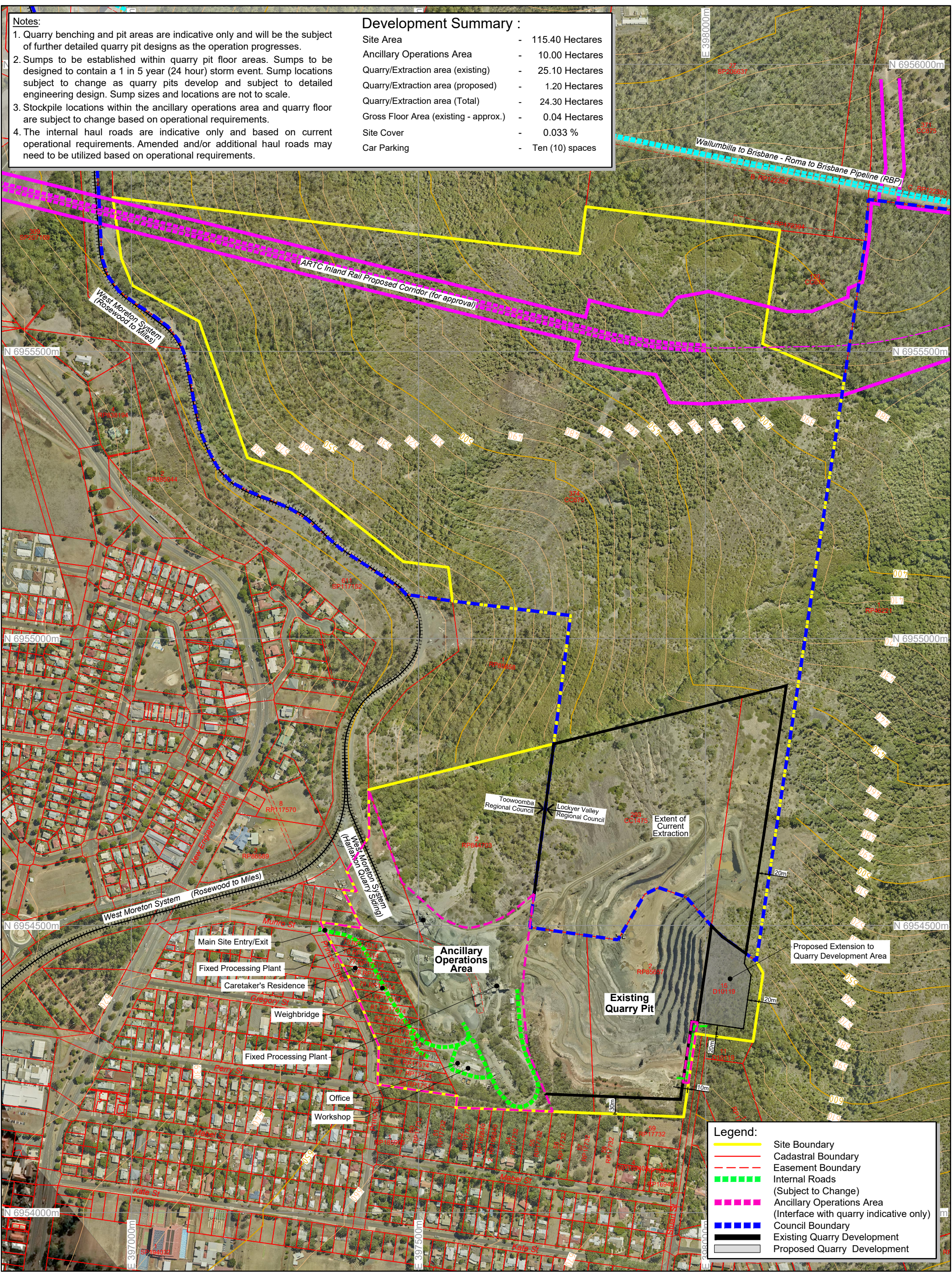


**Notes:**

1. Quarry benching and pit areas are indicative only and will be the subject of further detailed quarry pit designs as the operation progresses.
2. Sumps to be established within quarry pit floor areas. Sumps to be designed to contain a 1 in 5 year (24 hour) storm event. Sump locations subject to change as quarry pits develop and subject to detailed engineering design. Sump sizes and locations are not to scale.
3. Stockpile locations within the ancillary operations area and quarry floor are subject to change based on operational requirements.
4. The internal haul roads are indicative only and based on current operational requirements. Amended and/or additional haul roads may need to be utilized based on operational requirements.

**Development Summary :**

Site Area	-	115.40 Hectares
Ancillary Operations Area	-	10.00 Hectares
Quarry/Extraction area (existing)	-	25.10 Hectares
Quarry/Extraction area (proposed)	-	1.20 Hectares
Quarry/Extraction area (Total)	-	24.30 Hectares
Gross Floor Area (existing - approx.)	-	0.04 Hectares
Site Cover	-	0.033 %
Car Parking	-	Ten (10) spaces



REV	DESCRIPTION	DATE	BY

**Data Sources:**  
 Photography: © Groundwork Plus Pty Ltd UAV Photogrammetry, 2019-03-13  
 Topography: © Groundwork Plus Pty Ltd UAV Photogrammetry, 2019-03-13  
 Cadastre: © The State of Queensland (DNRM) 2019  
 Ecosystem: © 2020 Microsoft Corporation, © 2020 Maxar, © CNES (2020) Distribution Airbus  
 THESE DESIGNS AND PLANS ARE COPYRIGHT AND ARE NOT TO BE USED OR REPRODUCED WHOLLY OR IN PART OR TO BE USED ON ANY PROJECT WITHOUT THE WRITTEN PERMISSION OF GROUNDWORK PLUS PTY LTD. ABN: 13 609 422 791

**PROJECT:** Harlaxton Quarry

**CLIENT:** Quarry Products Pty Ltd

**TITLE:** Existing and Proposed Operations

**SCALE:** 1:6,000  
 0 120m  
 When Printed On A3

**DRAWING NUMBER:** 381.DRG.126

**REVISION:**

**DATE:** 8 December 2020 **DRAWN:** JVVASH **DATUM:** HORIZONTAL / VERTICAL / ZONE

**PRINTED:** 8 December 2020 **CHECKED:** JTAYLOR **GDA94 / MGA / AHD / 56**

**GROUNDWORK plus**

PH: +61 7 3871 0411  
 WWW.GROUNDWORK.COM.AU